



**COMPLIES COMPLETELY WITH RDSO SPECS
NO.TI / SPC / OHE / TIPS / 1031 (Dec 2013)**

DT-9897

REV 1.1.4

High Performance Thermal Imager

DT-9897 is a high-performance Thermal Imager with a high resolution of 384x288px, helping you to discover potential problems, with innovative features and functionality. You can perform infrared inspections faster and more efficiently and thoroughly document problem areas for additional information.



KEY FEATURES

- 384x288 High Performance & high resolution Thermal Imager with TFT color LCD display
- Professional IR-optical focus system ensures that images are in good focus for optimum image clarity and scanning convenience
- Thermview analysis system—quickly identify and keep track of inspection locations by adding digital images of important information and surrounding areas
- Finds problems faster and easier by accurately identifying potential issues by combining digital and IR images
- Picture in Picture function Displays Thermal Image super-imposed over a digital image
- LED Flashlight allows the visual camera and fusion to be used in poorly lit environments
- Wide Temperature Range from -20 to +650°C targeting electrical and industrial applications
- ±2% Accuracy for reliable temperature measurement
- The image rotation facility allows to automatically rotate the active image
- Audio and Text annotation
- Capacitive touch screen is easier, productive and efficient to operate it
- Lithium polymer Rechargeable Battery lasts > 4hrs continuous use; and is replaceable
- An easy-to-access thumbnail image gallery helps you to quickly review and find your thermal images
- Area (Min/Max) mode shows the Minimum or the Maximum Temperature reading in the selected area
- A conveniently located button activates the laser pointer that will help you associate the hot or cold spot in the thermal image with the real physical target in the field
- In order to adapt the device to every situation both wide angle and tele-lenses are available
- Equipped with HDMI, USB, SD card and WiFi output.
- With WiFi data transfer of liver videos
- With laser range finding up to 30m

SPECIFICATIONS

Imaging And Optical Data	
IR Resolution	384 x 288 pixels, Focal Plane Array (FPA), Uncooled Microbolometer
Field of View (FOV)	24.6° x 18.6°
Minimum focus Distance	0.3m (0.99ft.)
Spatial Resolution	(IFOV) 1.15mRad
Thermal Sensitivity / NETD	< 0.05°C @ +30°C (+86°F) / 50 mK
Image Frequency	50Hz
Focus mode	Manual
Zoom	1-16x Continuous, Digital Zoom
Auto Fusion	Device automatically displays the best blend percentage based on the image and temperature
Spectral Range	7.5µm - 14µm
Image Presentation	
Display	3.5" TFT, Capacitive Touch Screen
Image modes	IR Image, Visual Image, Picture in Picture
Picture in Picture	IR Area on Visual Image or Visual Image Area on IR
Color Palettes	GRAY/ GRAYIRON / RAINBOW / FEATHER
Measurement	
Object Temperature Range	Low Range -20°C to + 150°C (-4°F to + 302°F) High Range 650°C (+32°F to +1202°F)
Accuracy	±2°C (±3.6°F) or ±2% of Reading
Measurement Analysis	
Spotmeter	3
Emissivity Adjustable	0.01 ~ 1.0 Adjustable
Emissivity Table	Emissivity Table of Predefined Materials
Line	2 lines (Horizontal and Vertical)
Area	3 Boxes with max. / min. / Average
Automatic Hot / Cold Detection	Auto Hot or Cold Spotmeter Markers
Isotherm	Detect High / Low Temperature / Interval
Difference Temperature	Delta Temperature Between Measurement Pointer and Reference Pointer
Measurement corrections	Emissivity, Ambient Temperature, Distance, Relative Humidity, Offset Temperature
Set-Up	
Laser / Flood light	< class2 / white LED Floodlight
Set-up Commands	Local Adaptation of Units, Language, Date and Time Formats, Information of Camera
Languages	English, Chinese, French, German, Spanish
Storage Of Videos	
Storage Media	Internal Memory of more than 1000+ images, Extendable Memory using SD card upto 8GB
Video Storage format	Standard MPEG-4, 640x480@30fps, on Internal Memory or Memory Card > 60 Minutes
Video Storage Mode	IR / Visual Images; Simultaneous Storage of IR and Visual Images
Storage Of Images	
Image Storage Format	Standard JPEG, Including Measurement Data, on Internal or Memory Card > 1000 Pictures
Image Storage Mode	IR / Visual Images; Simultaneous Storage of IR and Visual Images

SPECIFICATIONS

Annotations	
Text Annotations	User defined text annotations with each image using onscreen keyboard
Voice Annotations	Users can record upto 60 seconds of voice tag along with each image
Digital Camera	
Built in Visible Light Digital Camera	5MP
Data Communication Interfaces	
Data Interfaces	USB-mini, data transform between camera and PC, WiFi
Video Out	Composite (PAL and NTSC)
Power System	
Battery	Lithium polymer battery, 4 hours operating time
Input Voltage	DC 5V to 12V
Charging System	In camera (AC adapter)
Power Management	Automatic shutdown and sleep mode (user selectable)
Environmental Data	
Operating Temperature Range	-20°C to + 50°C (-4°F to + 122°F)
Storage Temperature Range	-40°C to + 70°C (-40°F to + 158°F)
Relative Humidity (operating and storage)	0% to 90% non condensing
Encapsulation	IP65
Drop test	2m
Bump	25g (IEC60068-2-29)
Vibration	2g (IEC60068-2-6)
Size (H x W x D)	260mm x 101mm x 120mm
Weight	820g

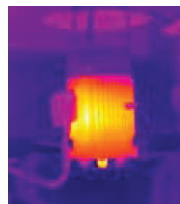
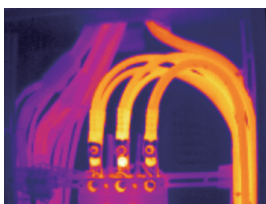
APPLICATIONS

HVAC/R
 Transportation / Automotive
 Cooling and Reheating
 Serving Areas
 Food Service Equipment
 Cold Storage

INCLUDED ACCESSORIES:

Hard Transport Case, Lens, AC Charger / Power Supply, Battery, Camera Lens Cap, Software & Manual CD-ROM, Micro SD Card, USB Cable & Video Cable, Gift Box.

*Technical Specifications & Appearance are subject to change without prior notice



Contact :

CEM INSTRUMENTS (INDIA) PVT. LTD.
 32A, Ganesh Chandra Avenue, 4th Floor, Kolkata 700013
 Tel: 033-22151376
 Email: info@cem-instruments.in
 Web: www.cem-instruments.in

CEM TEST INSTRUMENTS GmbH
 Hermann-Köhl-Str. 7 28199 Bremen, Deutschland
 Tel.: +49(0)4219601-370
 Email: liu@cem-instruments.de

